

THE EFFICACY OF HOMEOPATHIC TREATMENT OF CANCER PATIENTS - A PROSPECTIVE OBSERVATIONAL COHORT STUDY.

DR. FAROKH J MASTER, M.D., Ph.D., CCMP

CO-AUTHOR: DR. SWATI Y VARGANTE; DR. VISHAL KADWAY; DR. SAYLEE DESHMUKH

KING EDWARD MEMORIAL HOSPITAL, MUMBAI & PUNE.

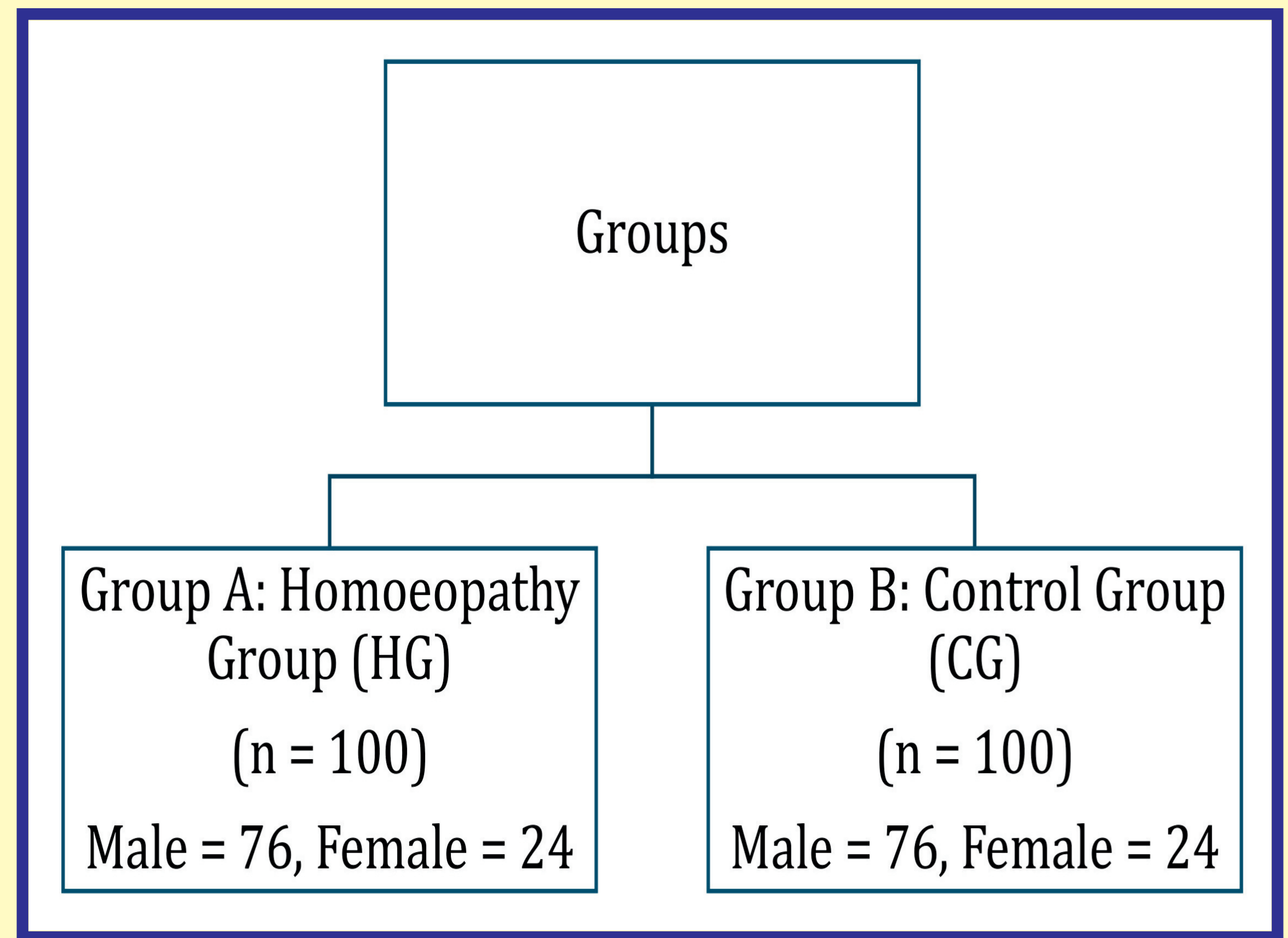
AIM

- To study the efficacy of homeopathic treatment of cancer patients

METHODS

- We conducted a prospective observational study at King Edward Memorial Hospital, Mumbai and Pune, in the department of palliative oncology in two differently treated cohorts: one cohort with patients under complementary homeopathic treatment (HG; n = 100), and one control with conventionally treated cancer patients (CG; n = 100). For a direct comparison, matched pairs with patients having tumour related pain and comparable prognosis were to be formed.
- Main outcome parameter:
- change of quality-of-life FACT-G (The Functional Assessment of Cancer Therapy – General), FACIT - Sp (Functional Assessment of Chronic Illness Therapy - Spiritual Well-Being) after 6 months.
- Secondary outcome parameters: change of quality of life (FACT-G, FACIT-Sp) after 9 months, as well as impairment by fatigue (MFI) and by anxiety (GAD-7) and depression (PHQ-9).

DESCRIPTIVE STATISTICS ABOUT THE ENROLLED PATIENTS:



TYPE OF CANCER:

- Stage of Cancer
 - 47% of Stage II (including IIa & IIb)
 - 53% of Stage III (including IIIa, IIIB, & IIIC)
- Metastasis
 - 99% from each group were having Advanced Stage of Cancer
- Chemo
 - HG: 36% were only on Homoeopathy, rest 64% were on Chemo (Avg 5.5 cycles)
 - CG: 100% chemo Rx (Avg 5.49 cycles)
- Radio
 - HG: 25% were not on Radio, Rest 75% were taking Radiotherapy (Avg 7.06).
 - CG: 25% were not on Radio, Rest 75% were taking Radiotherapy (Avg 6.84)

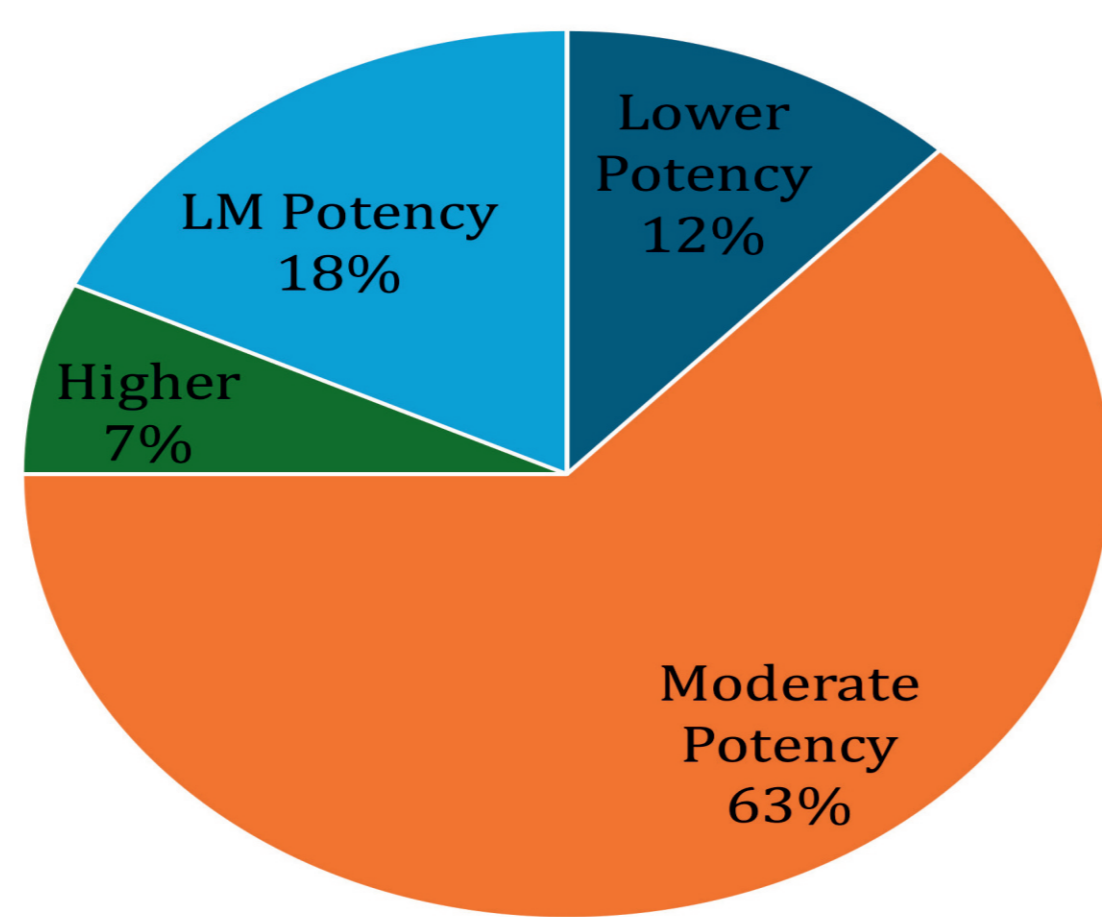
	GROUP A: HG	GROUP B: CG
Ca Mouth	27%	27%
Ca Pancreas	17%	17%
Ca Breast (Ductal Carcinoma)	12%	12%
Ca Oesophagus	11%	11%
Ca Larynx	6%	6%
Ca Prostrate	6%	6%
Ca Cervix	5%	5%
Osteogenic Sarcoma	4%	4%
Ca Alveolus	3%	3%
Ca Bronchus	3%	3%
Ca Colon	1%	1%
Ca Gall Bladder	1%	1%
Ca Kidney	1%	1%
Ca Lungs	1%	1%
Ca Ovary	1%	1%
Ca Appendix	1%	1%

REMEDIES PRESCRIBED: HG GROUP

REMEDY	FREQUENCY	REMEDY	FREQUENCY
Carcinosin	11	Apis Mel	2
5 FU	10	Cadmium	2
Carbo Animalis	5	Calc Flour	2
Conium	5	Hekla Lava	2
Rous Sarcoma	4	Kali Carb	2
Hydrastis	3	Kali Cyan	2
Merc Sol	3	Kali Iod	2
Arsenicum Album	3	Phytolacca	2
Nitric acid	3		

Other remedies prescribed in 1% of the cases:
Aloe, Arg, Cyan., Asteria Ruben, Aurum Mur, Aurum Mur Nat, Bellis Per, Bismuth, Chel, Causticum, Cundurango, Graphites, Hyos, Iris tenax, Iris V, Kali Chlor, Kreos, Lycopodium, Lappa, Lachesis, Myristica, Phosphorus, Psorinum, Plumbum, Sulphur, Sabina, Sanguinaria, Sepia, Viburnum

POTENCY SELECTION



- Lower Potency (3c – 6c)
- Moderate Potency (30c – 200c)
- Higher Potency (1M)
- LM Potency (0/1-0/4)

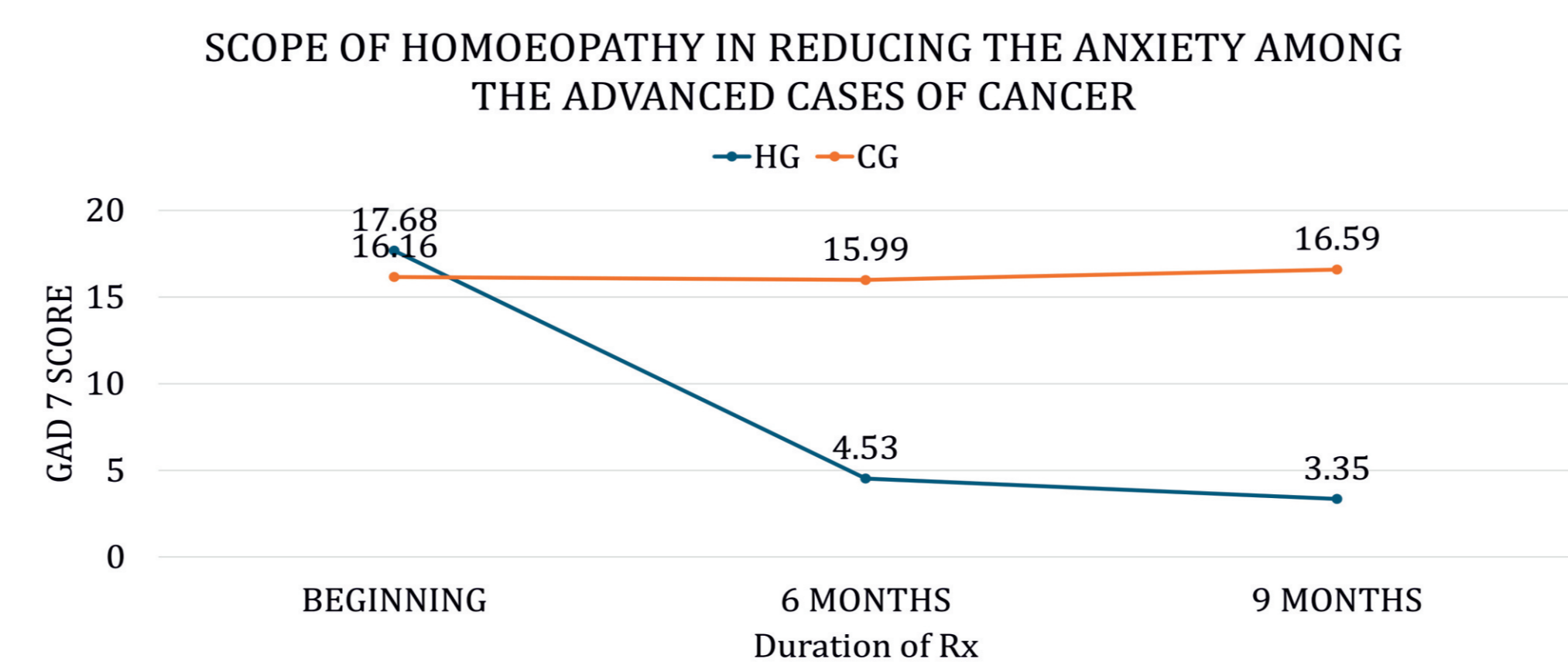
RESULTS

HG: FACT-G, or FACIT-Sp, respectively improved statistically significantly in the first six months. After 9 months, a further increase was found. Fatigue (MFI) decreased; anxiety (GAD-7) and depression (PHQ-9) also improved.

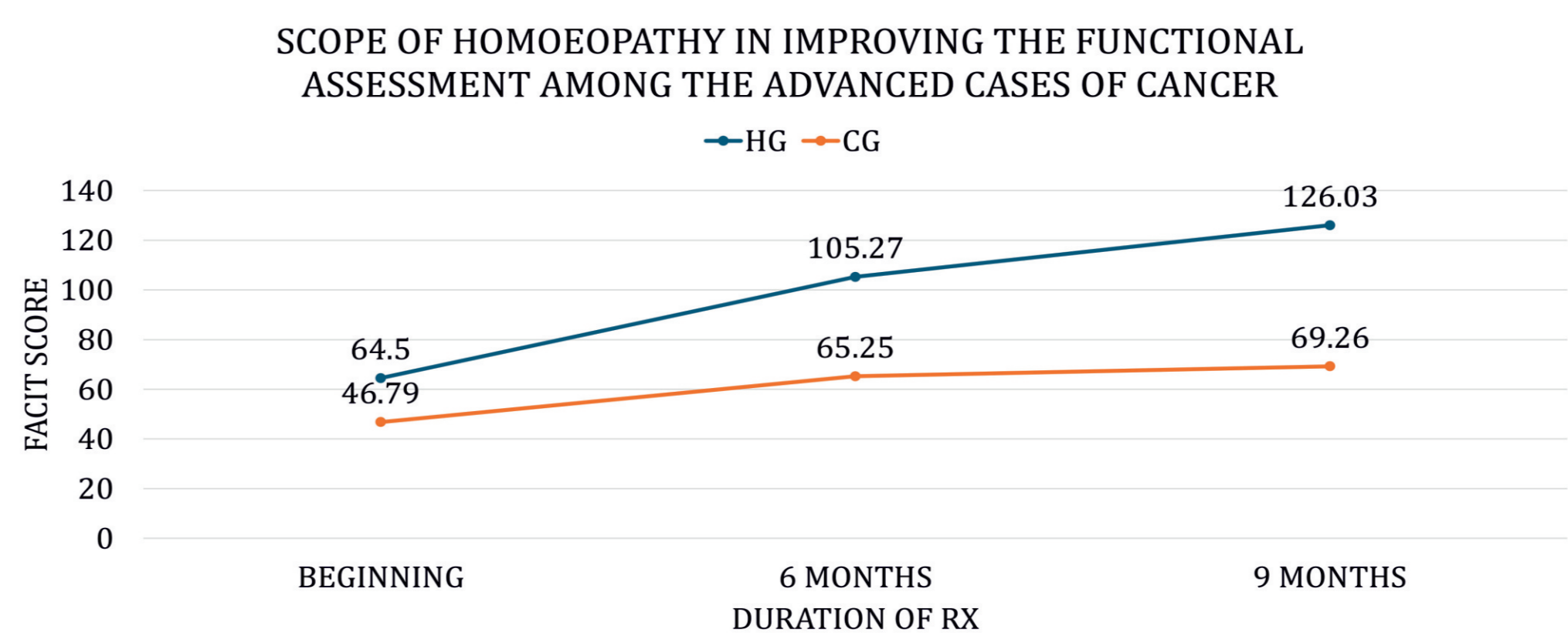
CG: FACT-G remained constant in the first six months. After nine months, there was a slight increase. FACIT-Sp scores improved significantly and declined over a period of time. Fatigue, anxiety, and depression gradually showed improvement.

INFERENTIAL STATISTICS:

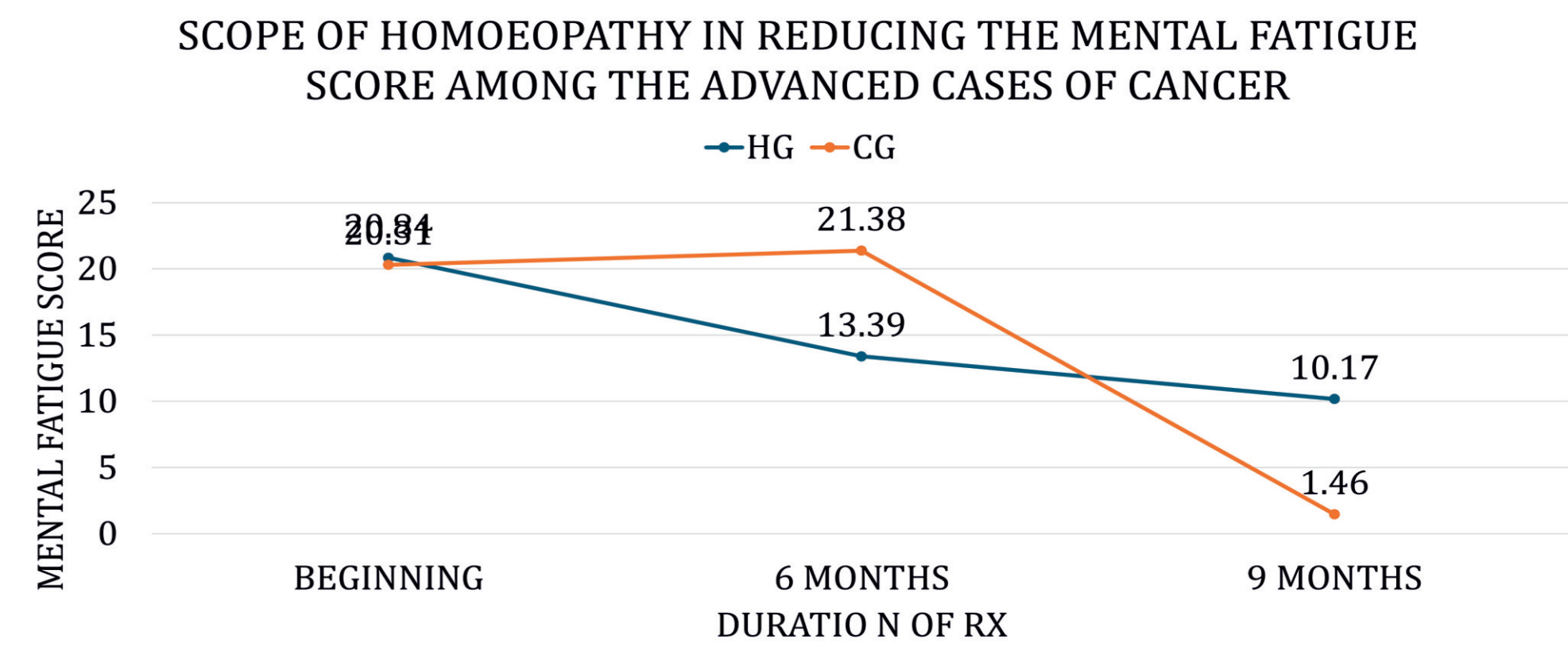
GAD 7, PHQ 9, FACIT SCALE, & MFI SCALE



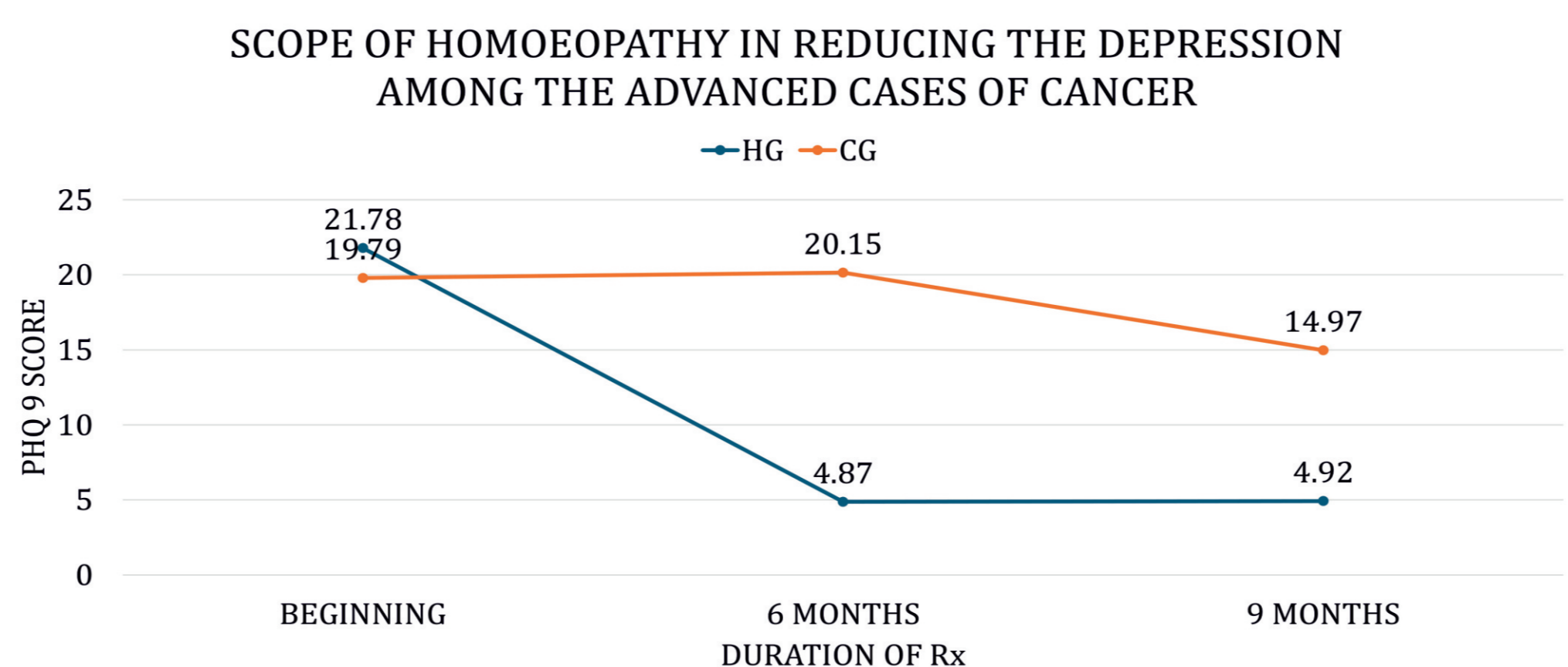
Mann Whitney Test applied, on the difference between before and after 9 months of Rx indicated, U = .000, p < .001, the significant improvement seen in the HG group (Mean Rank = 50.50) than CG Group (Mean Rank = 150.50)



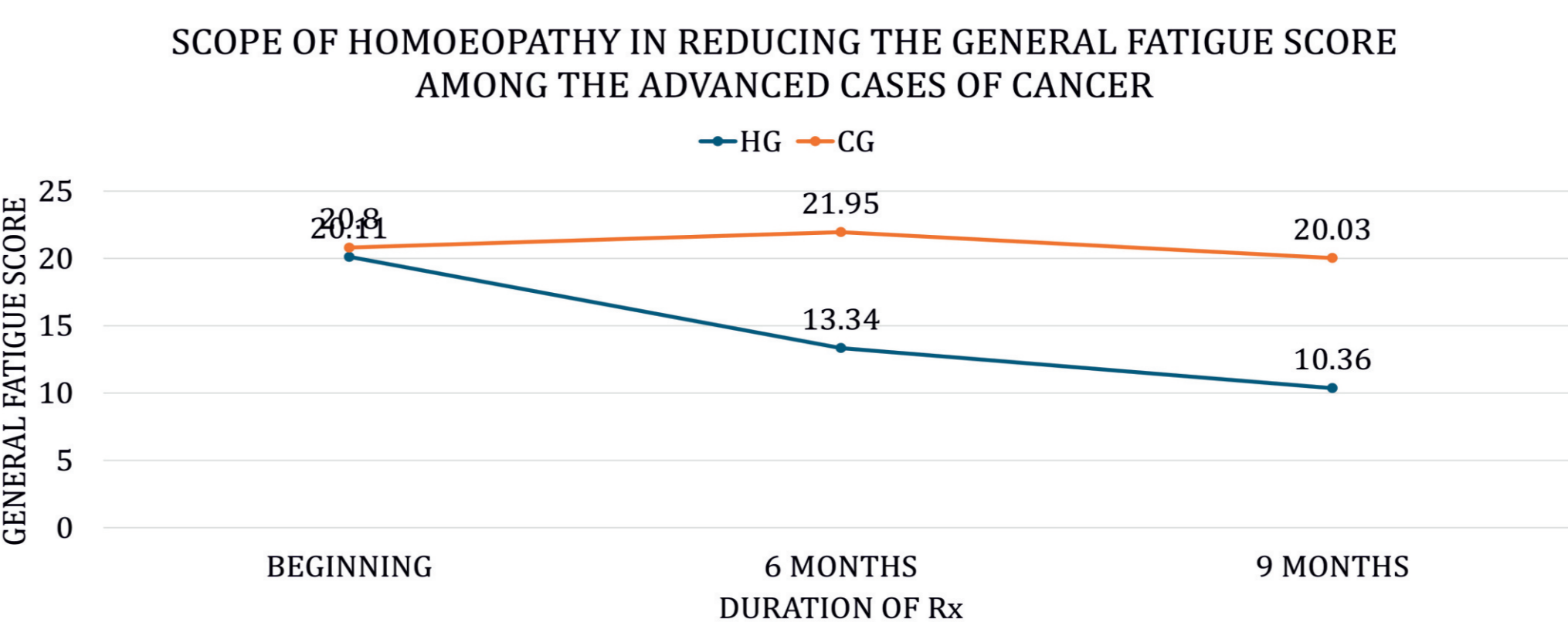
Mann Whitney Test applied, on the difference between before and after 9 months of Rx indicated, U = 620.00, p < .001, the significant improvement seen in the HG group (Mean Rank = 144.30) than CG Group (Mean Rank = 56.70)



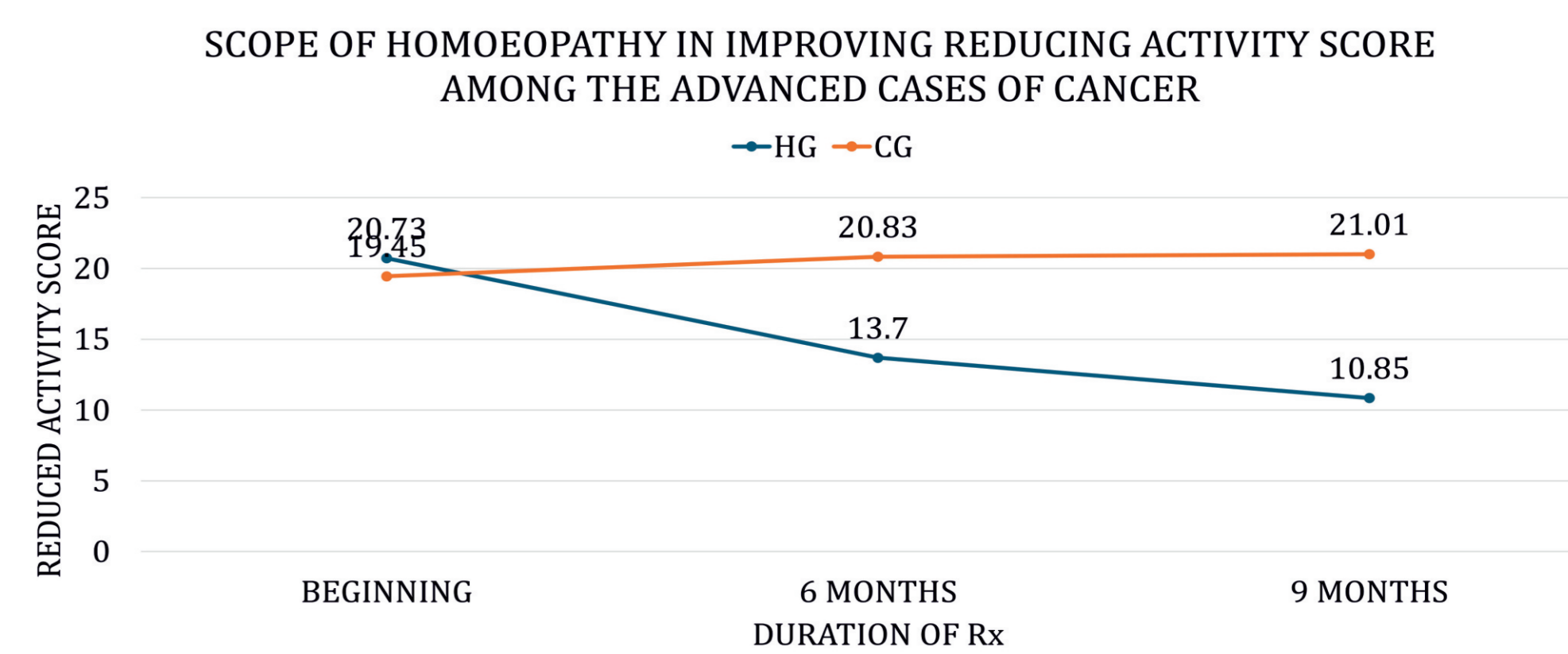
Mann Whitney Test applied, on the difference between before and after 9 months of Rx indicated, U = 5.00, p < .001, the significant improvement seen in the HG group (Mean Rank = 50.55) than CG Group (Mean Rank = 150.45)



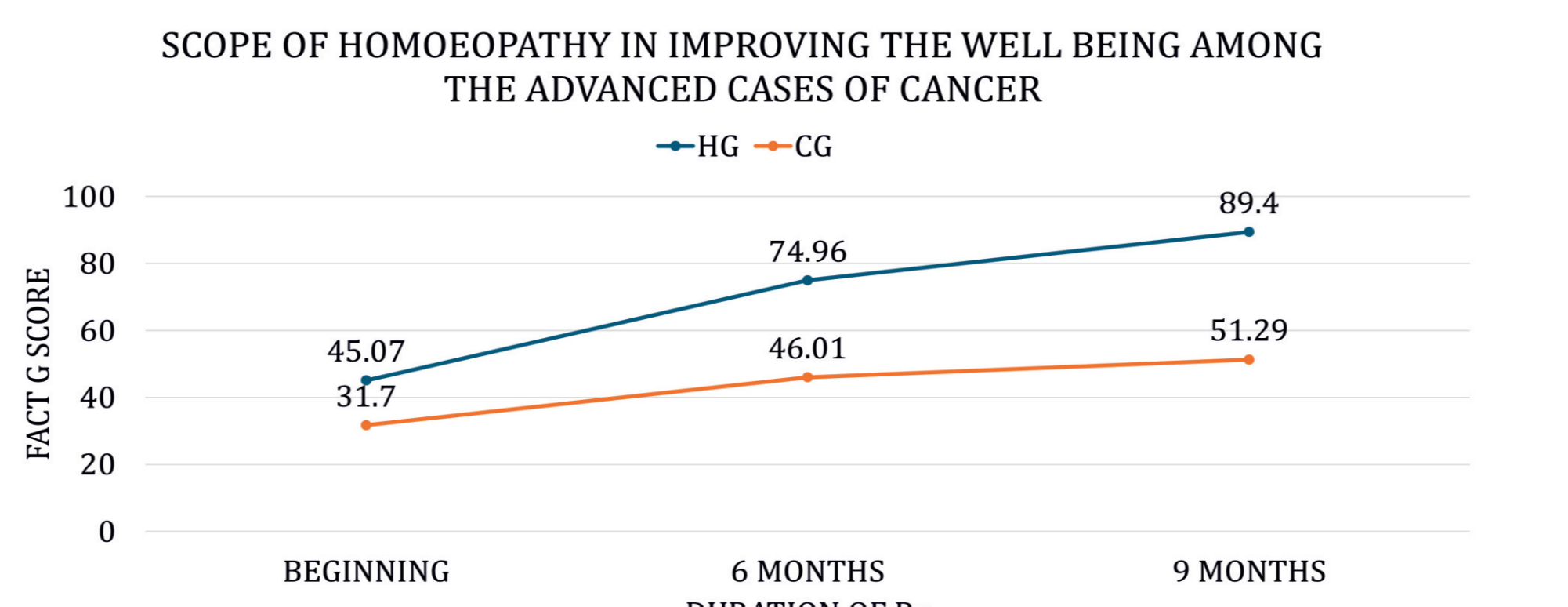
Mann Whitney Test applied, on the difference between before and after 9 months of Rx indicated, U = 165.5, p < .001, the significant improvement seen in the HG group (Mean Rank = 52.16) than CG Group (Mean Rank = 148.85)



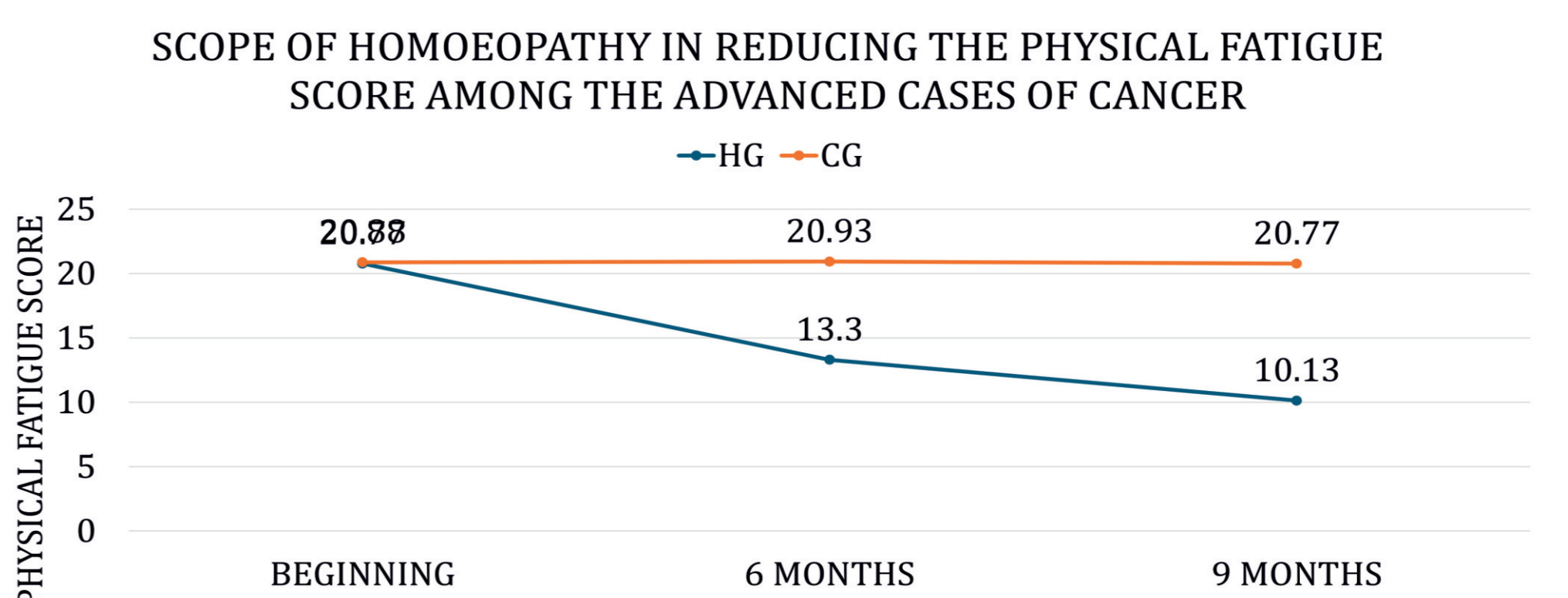
Mann Whitney Test applied, on the difference between before and after 9 months of Rx indicated, U = 75.500, p < .001, the significant improvement seen in the HG group (Mean Rank = 51.26) than CG Group (Mean Rank = 149.75)



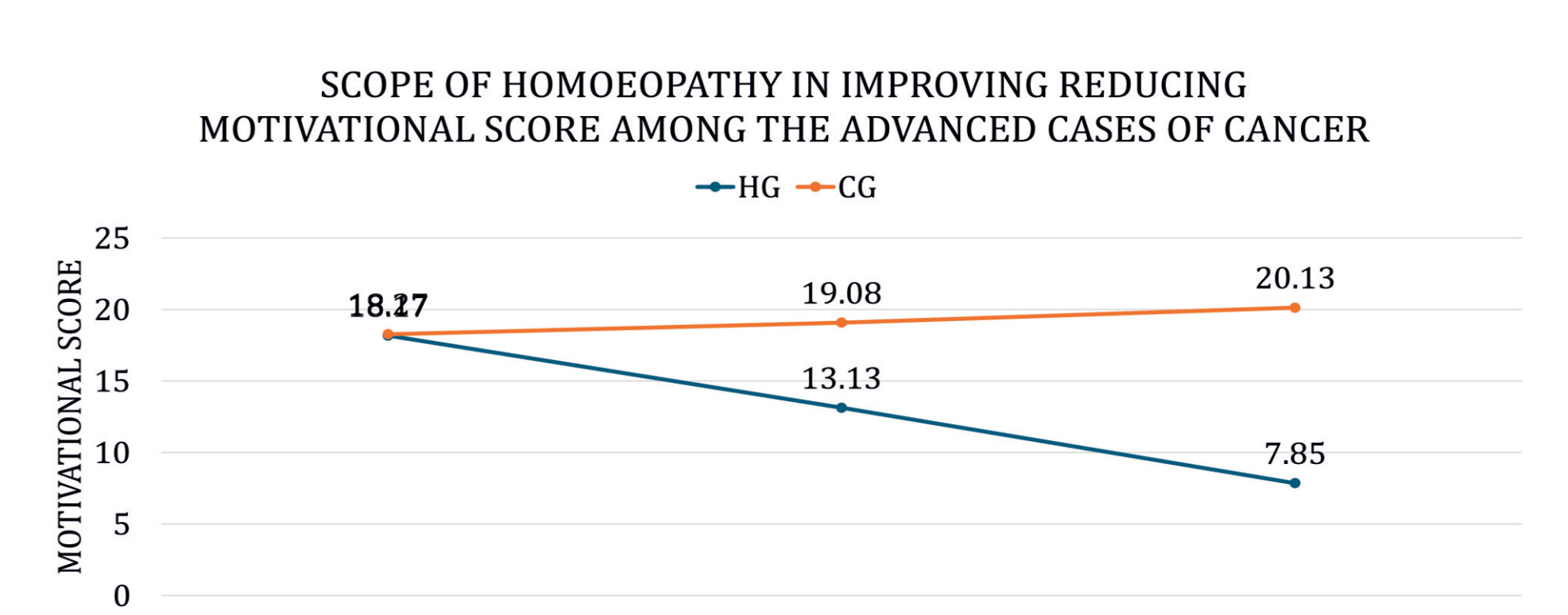
Mann Whitney Test applied, on the difference between before and after 9 months of Rx indicated, U = 14.500, p < .001, the significant improvement seen in the HG group (Mean Rank = 50.65) than CG Group (Mean Rank = 150.36)



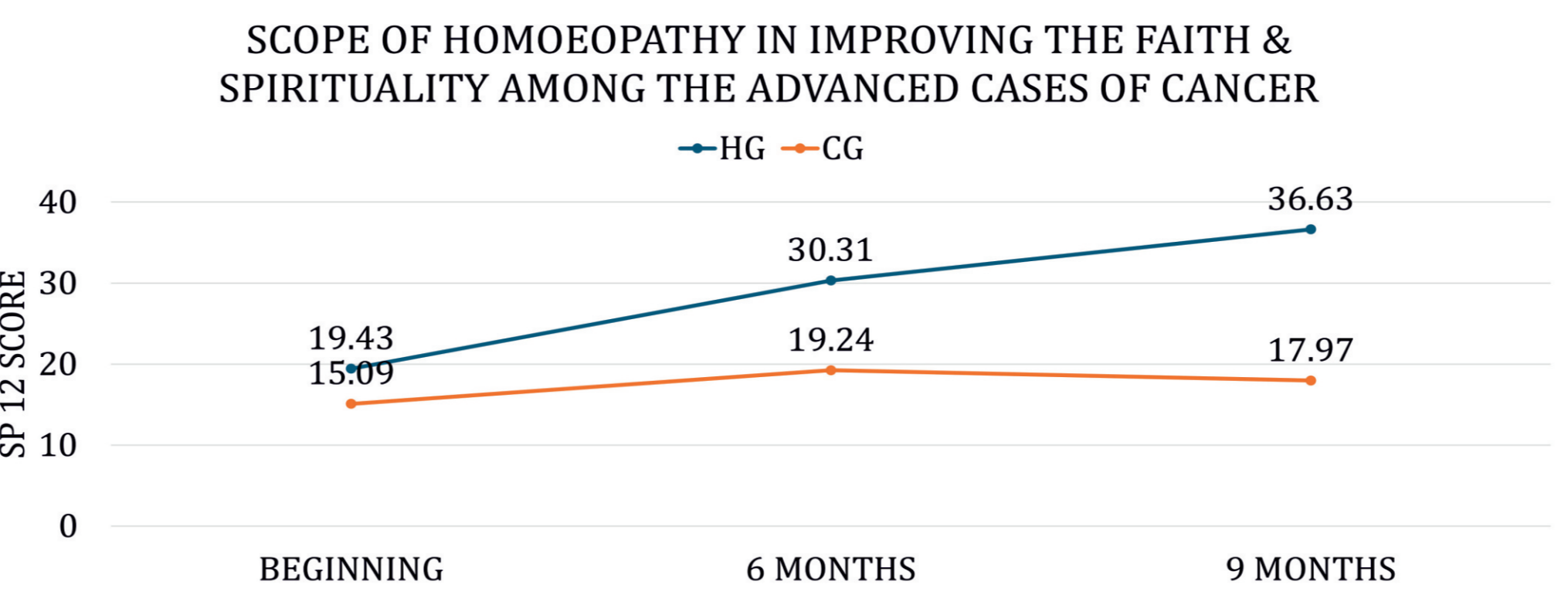
Mann Whitney Test applied, on the difference between before and after 9 months of Rx indicated, U = 567.00, p < .001, the significant improvement seen in the HG group (Mean Rank = 144.83) than CG Group (Mean Rank = 56.17)



Mann Whitney Test applied, on the difference between before and after 9 months of Rx indicated, U = 19.00, p < .001, the significant improvement seen in the HG group (Mean Rank = 50.69) than CG Group (Mean Rank = 150.31)



Mann Whitney Test applied, on the difference between before and after 9 months of Rx indicated, U = 118.50, p < .001, the significant improvement seen in the HG group (Mean Rank = 51.69) than CG Group (Mean Rank = 149.32)



Mann Whitney Test applied, on the difference between before and after 9 months of Rx indicated, U = 654.00, p < .001, the significant improvement seen in the HG group (Mean Rank = 143.96) than CG Group (Mean Rank = 57.04)

CONCLUSION

This study found an improvement of quality of life under complementary homeopathic treatment.

Homeopathic medicines reduces anxiety among the advanced cases of cancer.

Homeopathic medicines reduces depression among the advanced cases of cancer.

Homeopathic medicines reduces fatigue symptoms among the advanced cases of cancer.